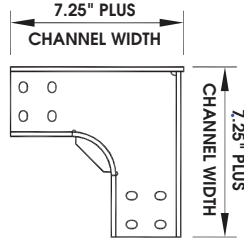
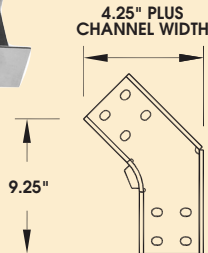


**Elbow Channel (EC)
3" Radius**

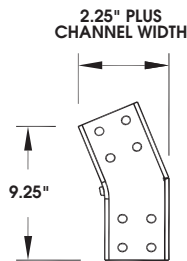
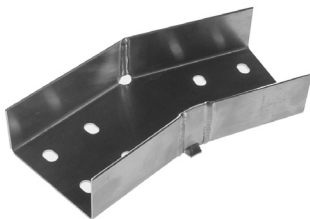
90° Bend



45° Bend



22.5° Bend



	Metal	Channel Width	Part Numbers				
90° Bend	3" Radius	Hot-Dip	2	EC2-GC2-R3D90			
		Galvanized	4	EC4-GC2-R3D90			
		Steel	6	EC6-GC2-R3D90			
	90° Bend	3" Radius	Natural	2	EC2-NA2-R3D90		
			Finish	4	EC4-NA2-R3D90		
			Aluminum	6	EC6-NA2-R3D90		
		90° Bend	3" Radius	Stainless	2	EC2-SS2-R3D90T4	
				Steel	4	EC4-SS2-R3D90T4	
				T-304	6	EC6-SS2-R3D90T4	
			90° Bend	3" Radius	Stainless	2	EC2-SS2-R3D90T6
					Steel	4	EC4-SS2-R3D90T6
					T-316	6	EC6-SS2-R3D90T6
45° Bend	3" Radius	Hot-Dip	2	EC2-GC2-R3D45			
		Galvanized	4	EC4-GC2-R3D45			
		Steel	6	EC6-GC2-R3D45			
	45° Bend	3" Radius	Natural	2	EC2-NA2-R3D45		
			Finish	4	EC4-NA2-R3D45		
			Aluminum	6	EC6-NA2-R3D45		
		45° Bend	3" Radius	Stainless	2	EC2-SS2-R3D45T4	
				Steel	4	EC4-SS2-R3D45T4	
				T-304	6	EC6-SS2-R3D45T4	
			45° Bend	3" Radius	Stainless	2	EC2-SS2-R3D45T6
					Steel	4	EC4-SS2-R3D45T6
					T-316	6	EC6-SS2-R3D45T6
22.5° Bend	3" Radius	Hot-Dip	2	EC2-GC2-R3D22			
		Galvanized	4	EC4-GC2-R3D22			
		Steel	6	EC6-GC2-R3D22			
	22.5° Bend	3" Radius	Natural	2	EC2-NA2-R3D22		
			Finish	4	EC4-NA2-R3D22		
			Aluminum	6	EC6-NA2-R3D22		
		22.5° Bend	3" Radius	Stainless	2	EC2-SS2-R3D22T4	
				Steel	4	EC4-SS2-R3D22T4	
				T-304	6	EC6-SS2-R3D22T4	
			22.5° Bend	3" Radius	Stainless	2	EC2-SS2-R3D22T6
					Steel	4	EC4-SS2-R3D22T6
					T-316	6	EC6-SS2-R3D22T6

ALL DIMENSIONS IN INCHES

Note: 4" wide aluminum shown in photos.